

SUBDIVISION PLAN OF:  
BLOCK A, SECTION 1, NANAIMO DISTRICT,  
PLAN 1748, EXCEPT THAT PART IN PLAN 35164,  
AND LOT L, SECTION 1, NANAIMO DISTRICT,  
PLAN 630

Pursuant to Section 67 of the Land Title Act.  
BCGS 926 011



The intended plot size of this plan is 560mm in height by  
864mm in width (D Size) when plotted at a scale of 1:750.  
Integrated Survey Area No. 20, City of Nanaimo, NAD83 (CSRS) 3.0.0.BC.1.NM.  
Grid bearings are derived from observations between  
geodetic control monuments 90H6375 & 90H6364.  
The UTM coordinates and estimated horizontal positional accuracy are derived  
from the MASCOI published coordinates and standard deviations for geodetic  
control monuments 90H6375 & 90H6364.  
This plan shows horizontal ground-level distances unless otherwise  
specified. To compute grid distances, multiply ground-level  
distances by the average combined factor of 0.9998525 which has been  
derived from geodetic control monuments 90H6375 & 90H6364.

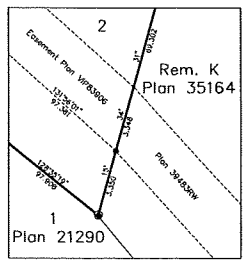
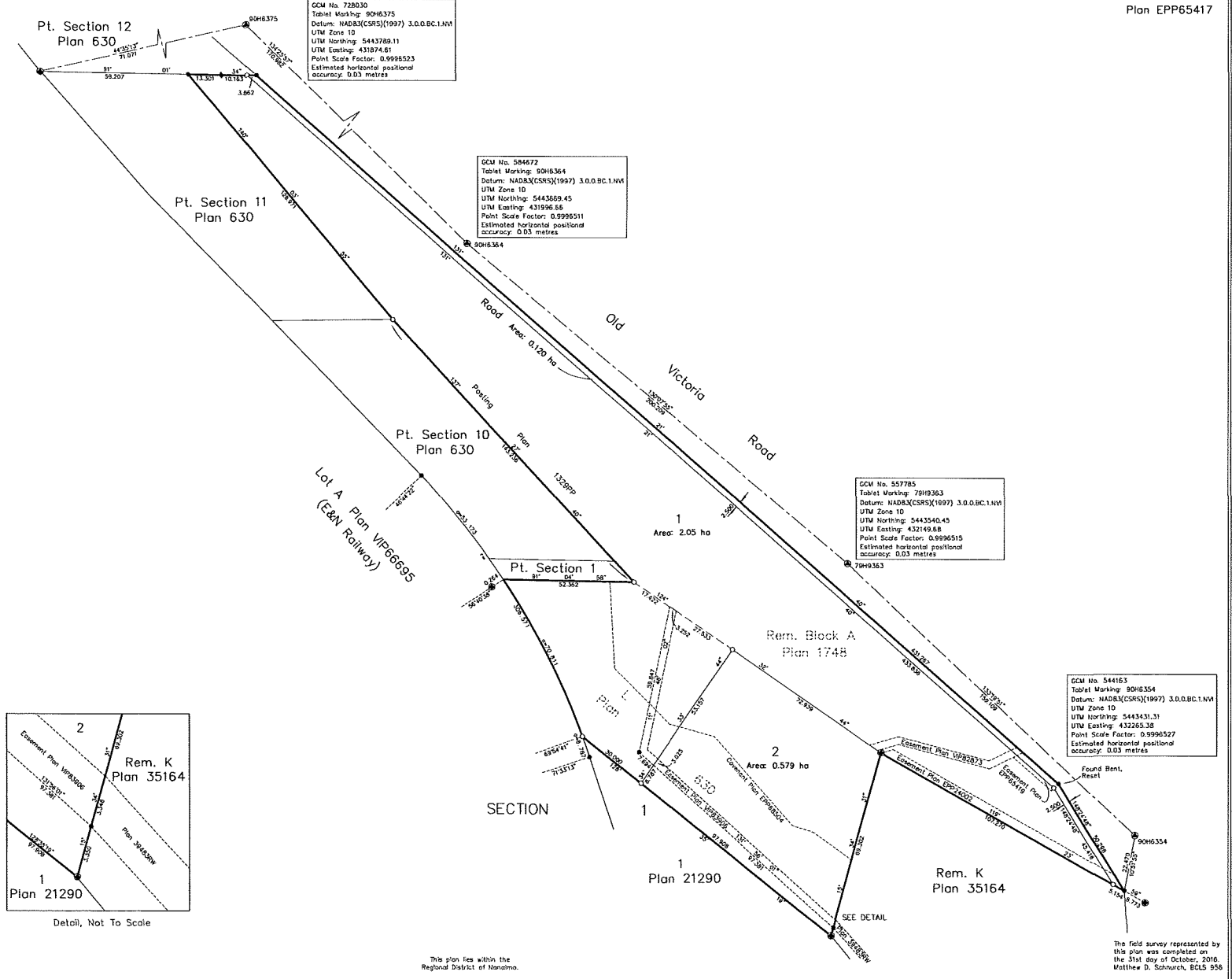
- Legend
- Denotes Standard Iron Post Placed
  - Denotes Standard Iron Post Found
  - Denotes Aluminum Post Found
  - Denotes Non-Standard Iron Post (Iron Bar) Found
  - Denotes Control Monument Found

A covenant in the name of the City of Nanaimo  
pursuant to section 219 of the Land Title Act are  
a condition of approval for this subdivision.

This plan lies within the jurisdiction of the  
Approving Officer for The City of Nanaimo.

Turner & land surveying-

605 Cornex Road  
Nanaimo, B.C.  
V9R 3J1  
250-753-9778  
File: 15-127



Detail, Not To Scale

This plan lies within the  
Regional District of Nanaimo.

The field survey represented by  
this plan was completed on  
the 31st day of October, 2016,  
Matthew D. Schurich, BCLS 956